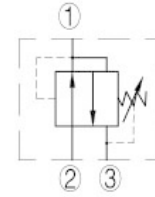
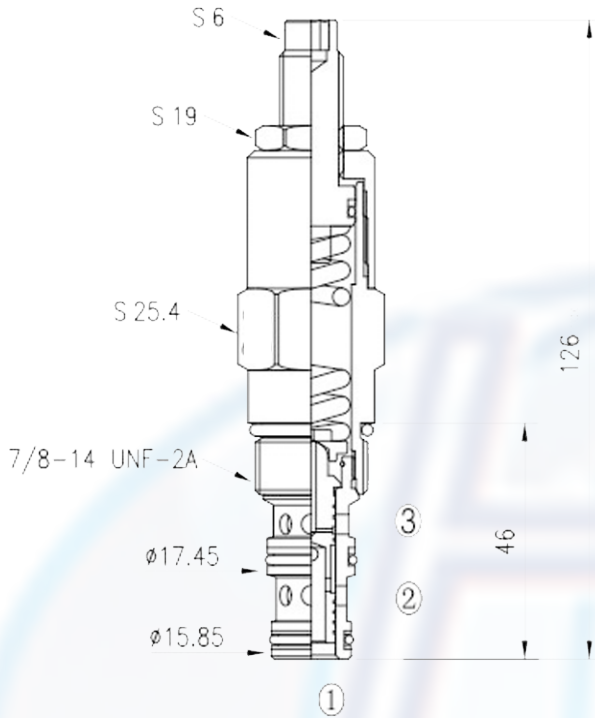


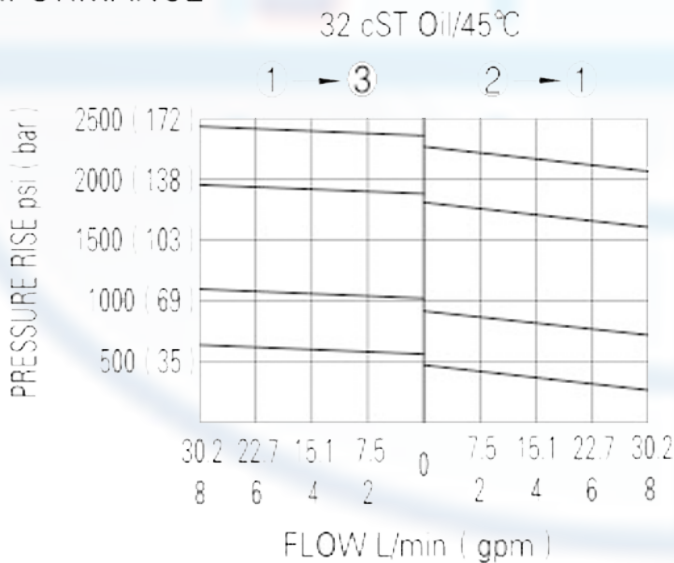
DPR2 - 10 -



SPECIFICATION:

Max working pressure:	207bar
Flow max:	see performant chart
Internal leakage:	<80cc/min/207bar
Filtration of oil:	25m or better
Temperature:	-30 ~ +110°C
Cavity:	10 - 3
Installatin torque:	34 ~ 37Nm

PERFORMANCE



In its steady state, the valve allows flow to pass bi-directionally from 2 to 1, with the spring chamber constantly drained at 3.

On attainment of a pre-determined pressure at 1, the cartridge shifts to restrict input flow at 2, thereby regulating pressure at 1. In this mode, the valve will also relieve 1 to 3 at approximately 10 bar over the reducing setting

to order:

DPR2 - 10 -

Direct-acting pressure
reducing/relieving
valves

Cavity

PRESS RANGE:

- 4 = 5.5 ~ 27.6bar, preset : 14bar
- 8 = 13.8 ~ 55.2bar, preset : 127bar
- 15 = 20.7 ~ 103bar, preset : 50bar
- 21 = 27.6 ~ 145bar, preset : 72bar