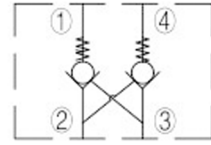
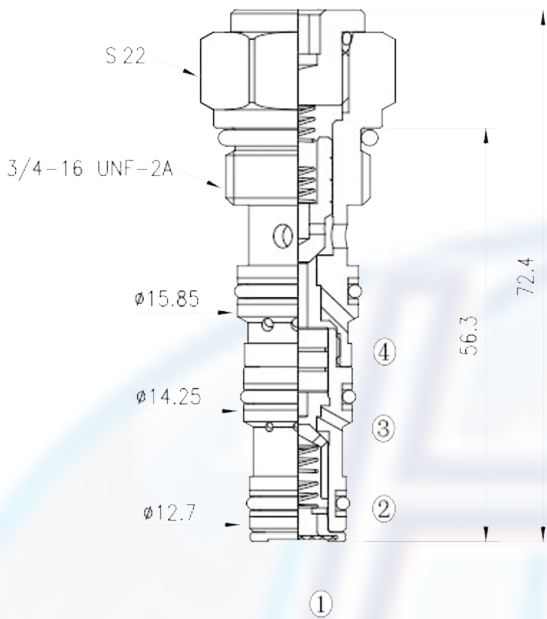




### DPC - 08 -

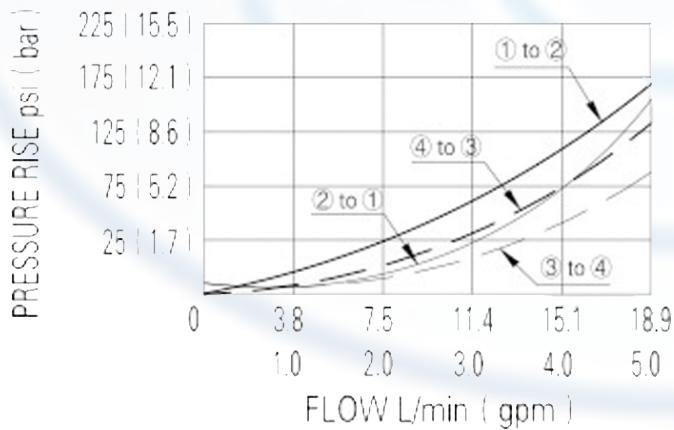


#### SPECIFICATION:

- Max working pressure: 210bar
- Flow max: see performant chart
- Pilot ratio: 2.5 : 1
- Internal leakage: 3 drops/min/210bar
- Filtration of oil: 25m or better
- Temperature: -30 ~ +110°C
- Cavity: 08 - 4
- Installatin torque: 25 ~ 28Nm

#### PERFORMANCE

32 cST Oil/45°C



The valve will block flow from 1 to 2, and from 4 to 3.

Flow is allowed in the opposite when pressure is applied to port 2 and/or 3 port. The valve has a 2.5:1 pilot ratio, so at least 1/2.5 of the load pressure at port 1 or 4 is required at the pilot lines (ports 2 or 3) to open the flow passage to allow flow from ports 1 or 4.

to order:

