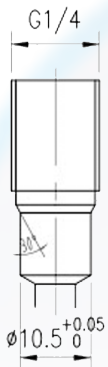
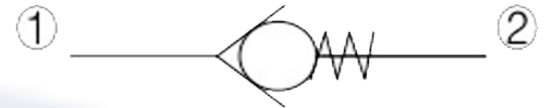


ICV - * * *

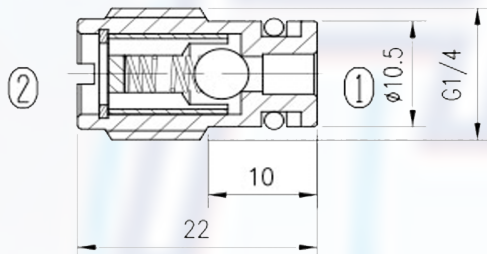
WORKING POSITION:

Pressure at 1 overcomes the spring-bias ball and allows free flow 1 to 2.

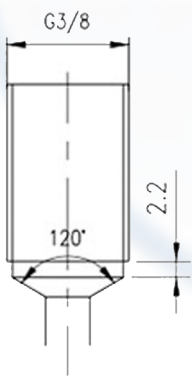
Flow in the opposite direction, from 2 to 1, is blocked by the ball



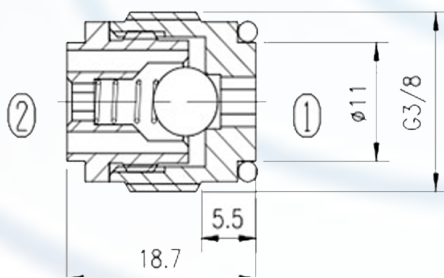
ICV - G1/4



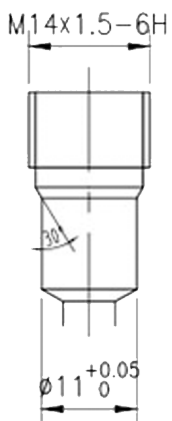
- Max working pressure: 350bar
- Flow max: 18L/min
- Internal leakage: 3 drops/min / 350bar
- Crack pressures 2.0 bar
- Filtration of oil: 25m or better



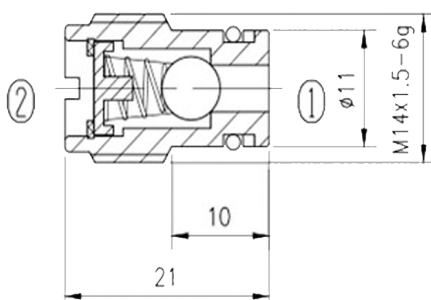
ICV - G3/8



- Max working pressure: 350bar
- Flow max: 30L/min
- Internal leakage: 3 drops/min / 350bar
- Crack pressures 0.9 bar
- Filtration of oil: 25m or better



ICV - M14 x 15



- Max working pressure: 350bar
- Flow max: 25L/min
- Internal leakage: 3 drops/min / 350bar
- Crack pressures 1.0 bar
- Filtration of oil: 25m or better