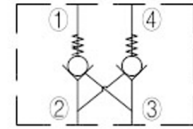
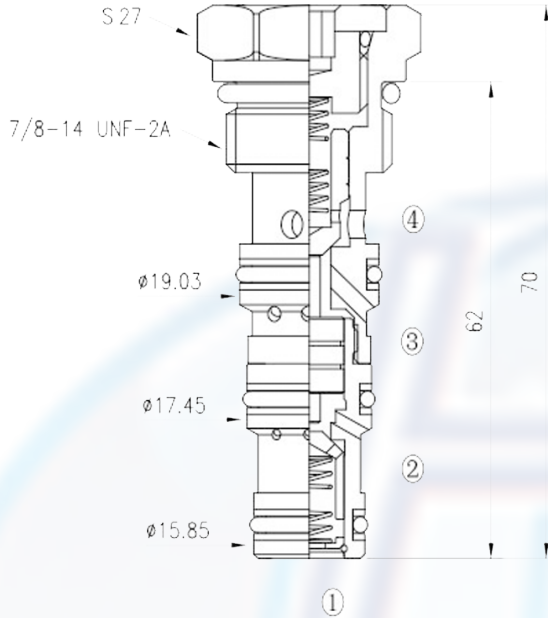




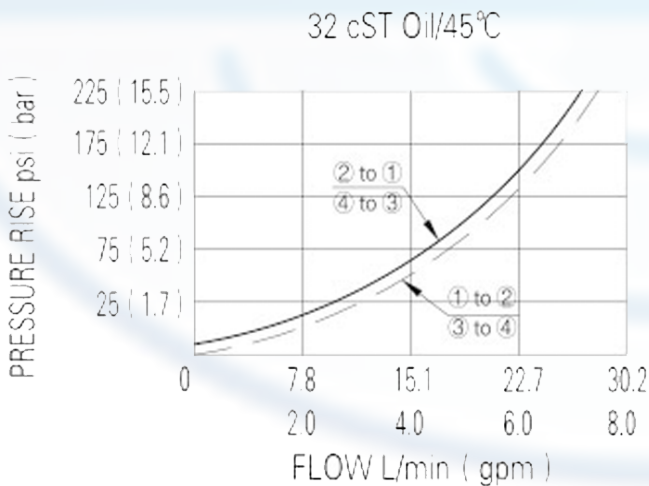
DPC - 10 -



SPECIFICATION:

Max working pressure:	210bar
Flow max:	see performant chart
Pilot ratio:	2.5 : 1
Internal leakage:	3 drops/min/210bar
Filtration of oil:	25m or better
Temperature:	-30 ~ +110°C
Cavity:	10 - 4
Installatin torque:	34 ~ 37Nm

PERFORMANCE



The valve will block flow from 1 to 2, and from 4 to 3.

Flow is allowed in the opposite when pressure is applied to port 2 and/or 3 port. The valve has a 2.5:1 pilot ratio, so at least 1/2.5 of the load pressure at port 1 or 4 is required at the pilot lines (ports 2 or 3) to open the flow passage to allow flow from ports 1 or 4.

to order:

