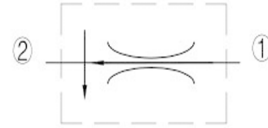
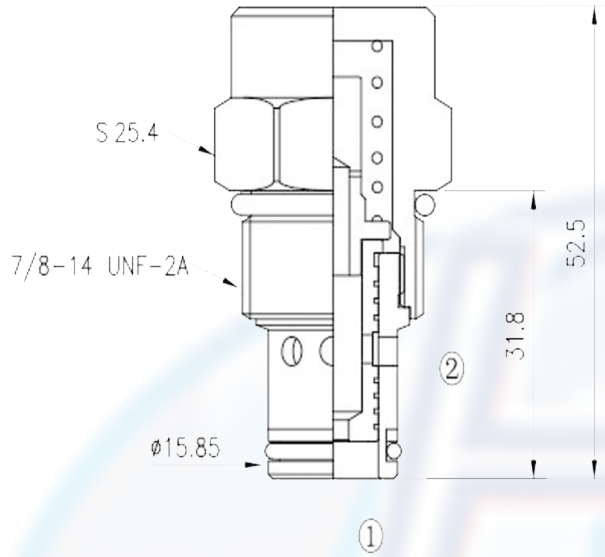


FR - 10

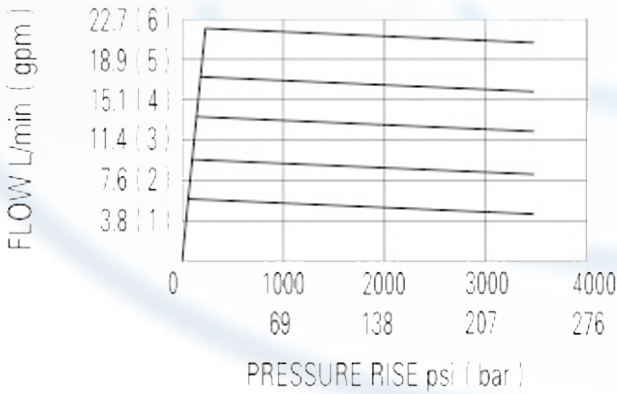


SPECIFICATION:

- Max working pressure: 240bar
- Flow settings: 0.4 ~ 22.7L/min
- Filtration of oil: 25m or better
- Temperature: -30 ~ +110°C
- Cavity: 10 - 2
- Installatin torque: 34 ~ 37Nm

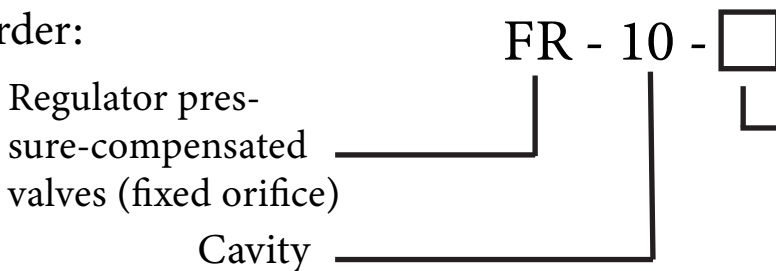
PERFORMANCE

32 cST Oil/45°C



The valve maintains a constant flow rate out of 2 feardless of load pressure changes in the circuit downstream of 1. the fixed control orifice is factory preset to load changes when the flow through the valve creates a pressure differential across the control orifice greater then 5.5bar, with accurate flow maintenance from 7.6 to 240bar. reverse flow (2 to 1) returns through the control orifice and is non-compensated.

to order:



FLOW MAINTENANCE:
 0.4 to 22.7 L/min settings ± 15% specify, for example:
 M2.5 = 2.5L/min
 M 7.0 = 7.0L/min
 etc.