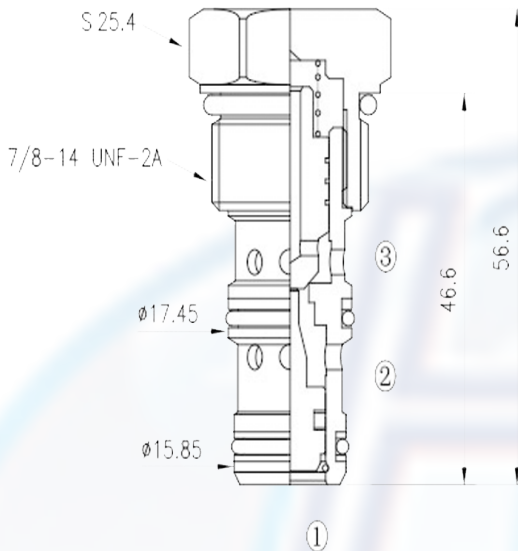
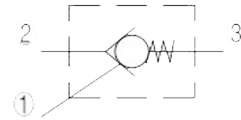


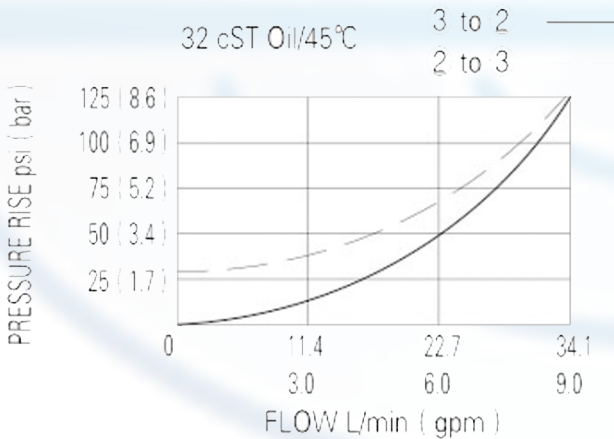
PC - 10



SPECIFICATION:

Max working pressure:	250bar
Flow max:	see performant chart
Internal leakage:	3 drops/min / 250bar
Pilot ratio:	3.5 : 1
Filtration of oil:	25m or better
Temperature:	-30 ~ +110°c
Cavity:	10 - 3
Installatin torque:	34 ~ 37Nm

PERFORMANCE



Pressure at 2 overcomes the spring-bias poppet and allows free flow to 3. Flow in the opposite direction, from 3 to 2, is blocked by the poppet. When the required pilot pressure is achieved at 1, the poppet unseats and allows flow between 3 and 2. The pilot piston area to poppet seat area ratio is 3.5 to 1.

to order:

