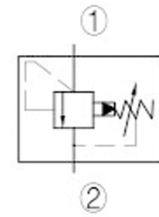
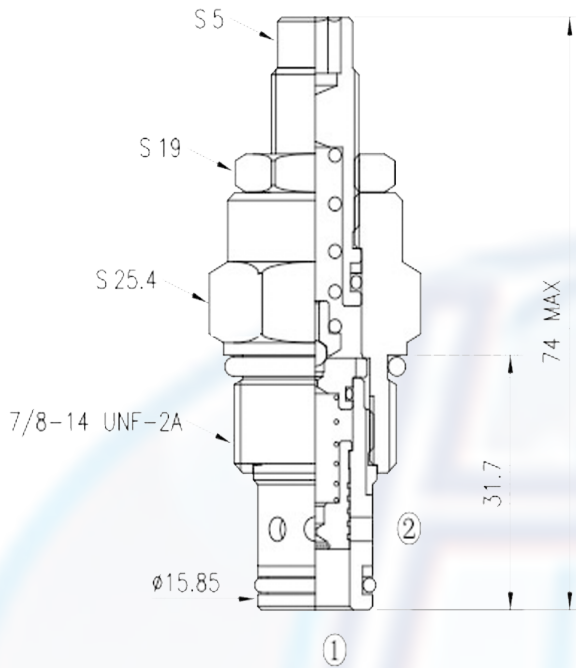


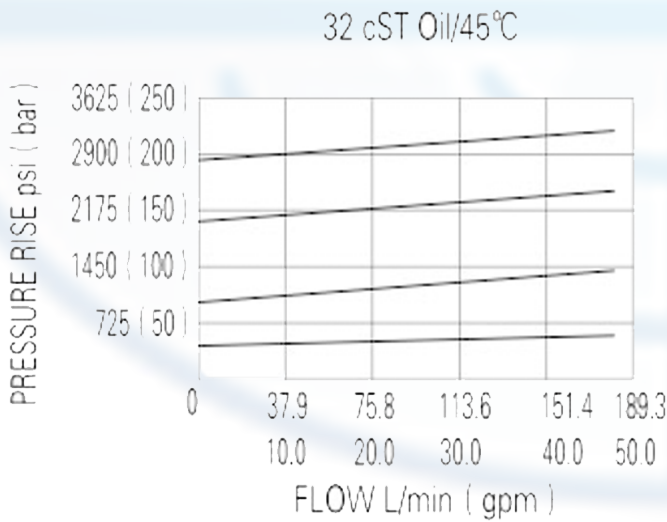
PSRV2 - 12



SPECIFICATION:

Max working pressure:	310bar
Flow max:	see performant chart
Internal leakage:	<115cc/min/310bar
Filtration of oil:	25m or better
Temperature:	-30 ~ +110°C
Cavity:	12 - 2
Installatin torque:	45 ~ 50Nm

PERFORMANCE



The valve prevents flow from 1 to 2 until pressur at 1 exceeds the set crack pressure and open the pilot section.

the pilot flow creates a pressure differential across the spool which causes the valve to open allowing flow from 1 to 2 protecting the circuit from over pressurization.

to order:

PSRV2 - 12 -

Pilot-operated
relife valves.

Cavity

PRESS RANGE:

04 = 6.9 ~ 27.6bar, preset : 20bar
15 = 10.3 ~ 103.4bar, preset : 90bar
35 = 20.7 ~ 241bar, preset : 90bar