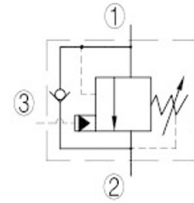
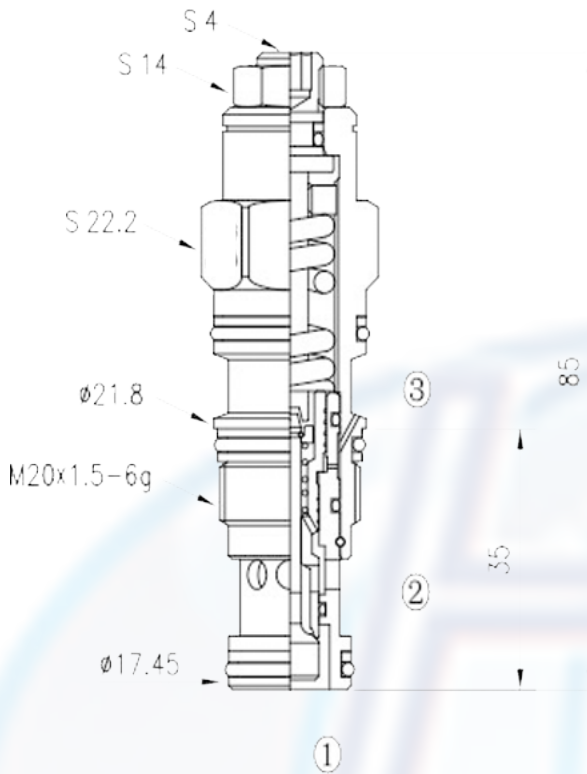


TCBCG - - -

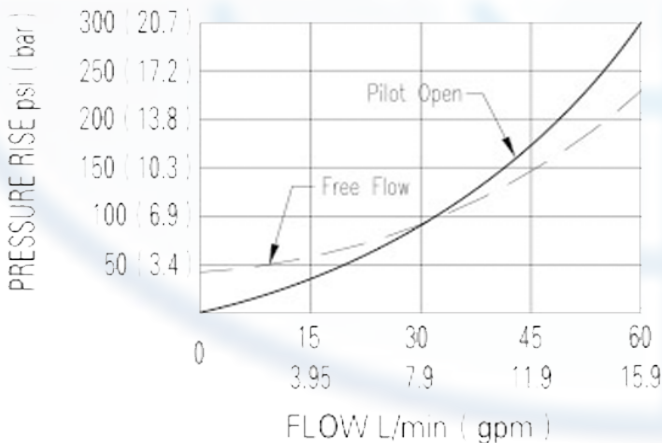


SPECIFICATION:

- Max working pressure: 350bar
- Flow max: see performant chart
- Internal leakage: 5 drops/min/210bar
- Filtration of oil: 25m or better
- Temperature: -30 ~ +110°C
- Cavity: T - 11A
- Installatin torque: 40 ~ 45Nm

PERFORMANCE

32 cST Oil/45°C



counterbalance valves should be set at leas 1.3 times the maximum load induced pressure.

backpressure at port 2 adds to the effec- tive relife setting at a raito of 1 plus the pilot ratio times the backpressure. reseat exceeds 85% of set pressure when the valve is standard set. Setting lower then the standard set pressure may result in lower reseat percentages.

to order:

TCBCG - - -

Counterbalance valves

PILOT RETIO :

G = 4.5:1

L = standard screw adjustment

SPRING RANGE:

- J = 140 ~ 350bar, preset: 210bar, check: 1.7bar
- K = 70 ~ 175bar, preset: 140bar, check: 1.7bar
- C = 140 ~ 350bar, preset: 210bar, check: 0.3bar
- D = 70 ~ 175bar, preset: 140bar, check: 0.3bar

SEAL KITS:

- N = buna
- V = viton