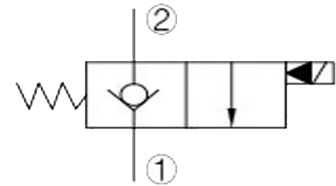
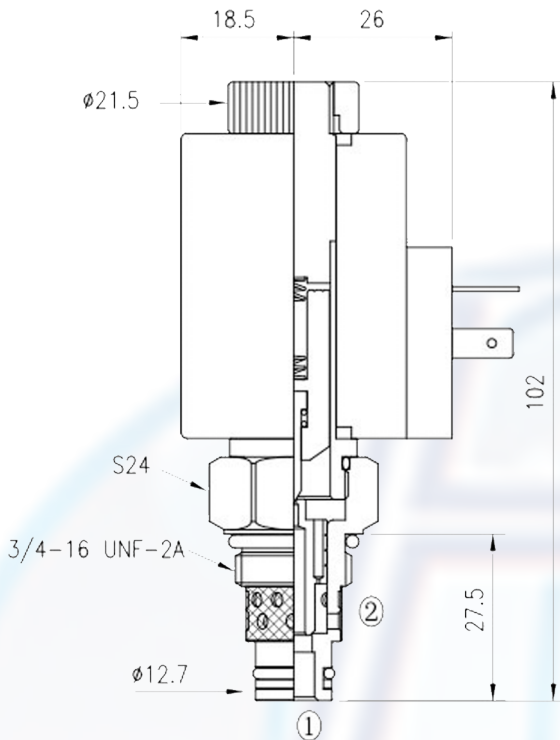


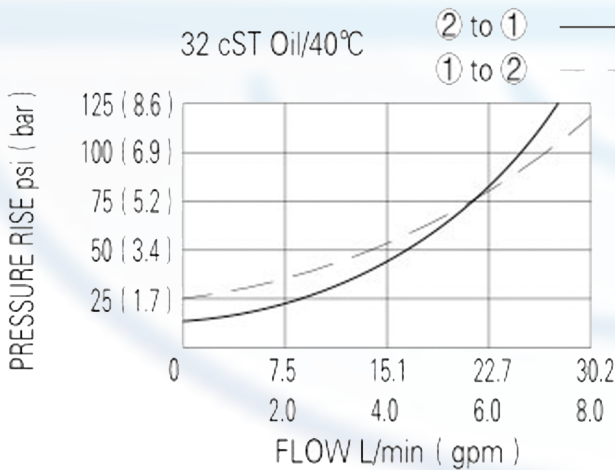
# SV6 - 08 - 2NCP - A



**SPECIFICATION:**

- Max working pressure: 250bar
  - Flow max: see performant chart
  - Internal leakage: 3 drops/min / 210bar
  - Filtration of oil: 25m or better
  - Temperature: -30 ~ +100c
  - Cavity: 08 - 2
  - Installatin: 25 ~ 28Nm
  - Coil rating: 85% ~110%
- Continuous from 85% to 110% of rated voltage

**PERFORMANCE**



When de-energized, the valve acts as a check valve, allowing flow from 1 to 2, while blocking flow from 2 to 1;  
 When energized, the poppet lifts to open the 2 to 1 flow path

to order: **SV6 - 08 - 2NCP - A** -  -

cavity \_\_\_\_\_

function \_\_\_\_\_

A = Electromagnet  
14 holes

- voltage:**
- 12 = 12V DC
  - 24 = 24V DC
  - 110 = 110V AC
  - 220 = 220V AC

**coil connection:**  
H = Hirschmann