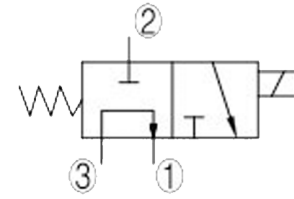
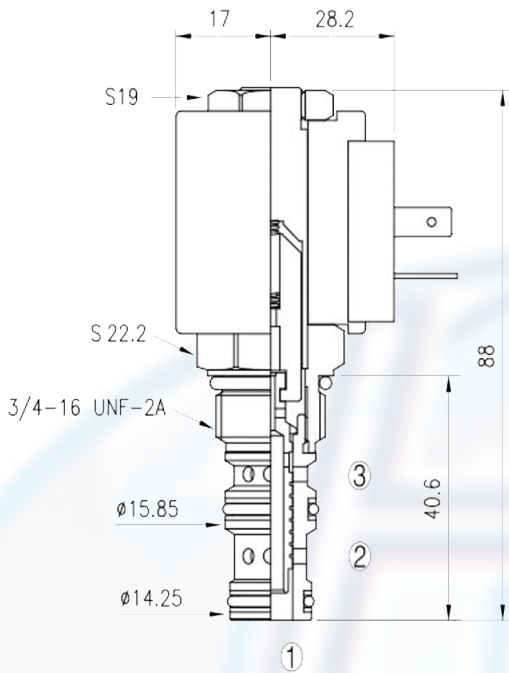




# SV2 - 08 - 3C

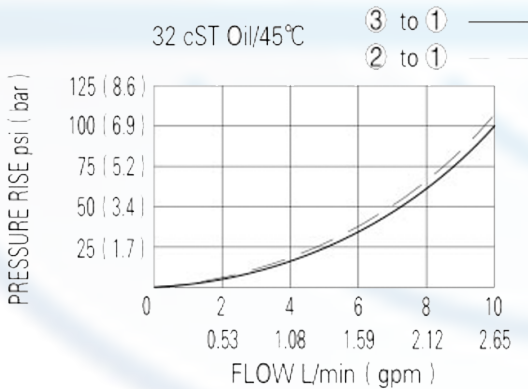


### SPECIFICATION:

- Max working pressure: 210bar
- Flow max: see performant chart
- Internal leakage: <math>< 82\text{cc/min}</math> / 210bar
- Filtration of oil: 25m or better
- Temperature:  $-30 \sim +110^{\circ}\text{C}$
- Cavity: 08 - 3
- Installatin torque: 25 ~ 28Nm
- Coil rating: 85% ~ 110%

Continuous from 85% to 110% of rated voltage

### PERFORMANCE



When de-energized, the valve allows flow from 3 to 1, while blocking flow at 2; when energized, the valve allows flow from 2 to 1, while blocking flow at 3.

to order:

**SV2 - 08 - 3C** -  -

cavity \_\_\_\_\_

function \_\_\_\_\_

voltage:  
 12 = 12V DC  
 24 = 24V DC  
 110 = 110V AC  
 220 = 220V AC

coil connection:  
 D = Double Lead  
 H = Hirschmann