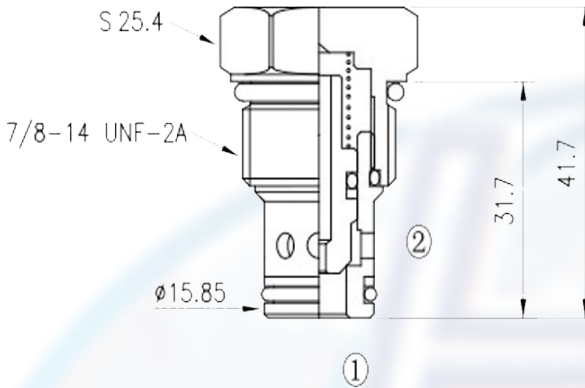
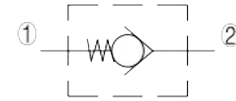




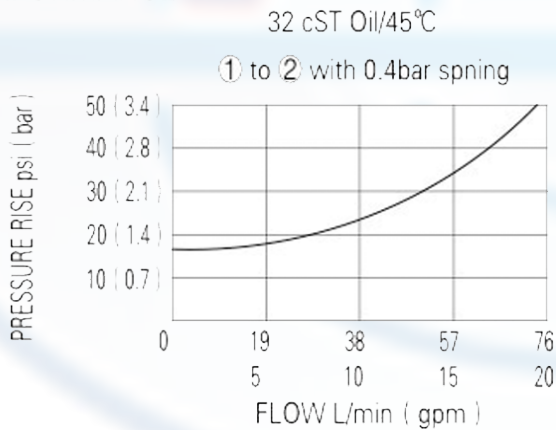
# CVR - 10 - P



### SPECIFICATION:

Max working pressure:	240bar
Flow max:	see performant chart
Internal leakage:	3 drops/min / 240bar
Filtration of oil:	25m or better
Temperature:	-30 ~ +110°C
Cavity:	08 - 2
Installatin torque:	34 ~ 37Nm

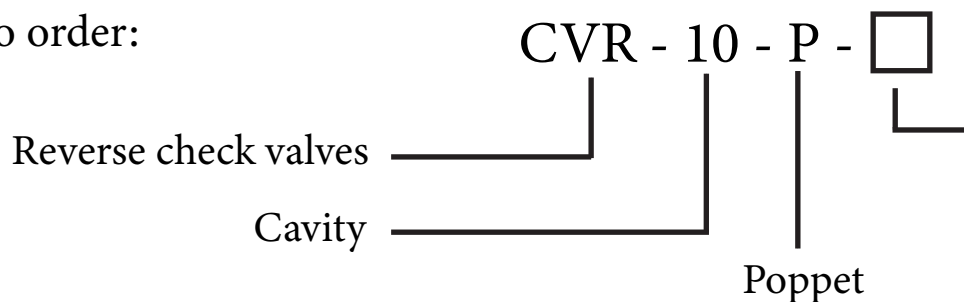
### PERFORMANCE



Pressure at 2 overcomes the spring-bias ball and allows free flow 2 to 1.

Flow in the opposite direction, from 1 to 2, is blocked by the ball

to order:



Crack pressure:

- 1.1 = 1.1 bar
- 2.6 = 2.6 bar
- 4.4 = 4.4 bar