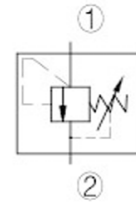
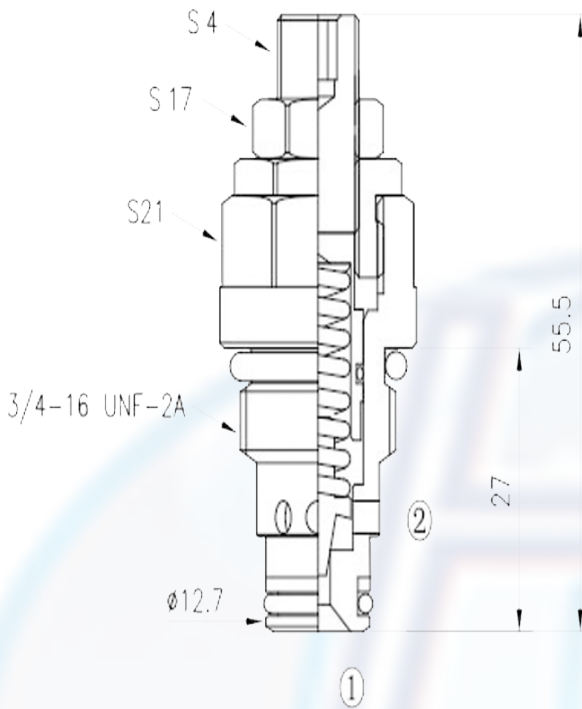


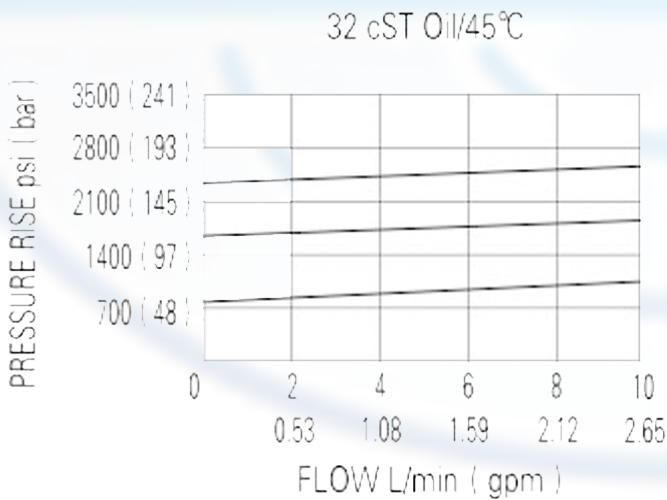
### RV - 08 -



**SPECIFICATION:**

- Max working pressure: 250bar
- Flow max: see performant chart
- Internal leakage: <10cc/min/250bar
- Filtration of oil: 25m or better
- Temperature: -30 ~ +110°C
- Cavity: 08 - 2
- Installatin torque: 25 ~ 28Nm

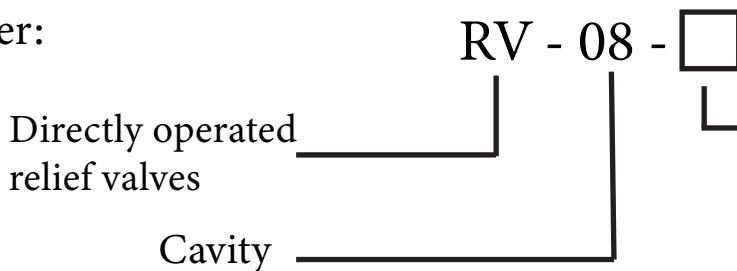
**PERFORMANCE**



The valve prevents flow from 1 to 2 until the set crack pressure at 1 is achieved.

The poppet then unseats allowing flow from 1 to 2 protecting the circuit from over pressurization.

to order:



**PRESS RANGE:**

- 07 = 17 ~ 70bar, preset : 50bar
- 18 = 28 ~ 160bar, preset : 110bar
- 30 = 80 ~ 250bar, preset : 160bar